

TODD WALK, LONDON N7

We are delighted to present this 2 double bedroom first floor flat. The flat has been decorated to a high standard. Benefits include 2 x balconies (1 south facing) open plan kitchen reception, luxurious bathroom with walk-in shower, lots of storage and close to Finsbury Pk station and Big Jo's café. The property is available from 21st January 2022

£400 p/w



Todd Walk, LONDON N7

Todd Walk, N7

Approximate Gross Internal Area
73.7 sq m / 793 sq ft

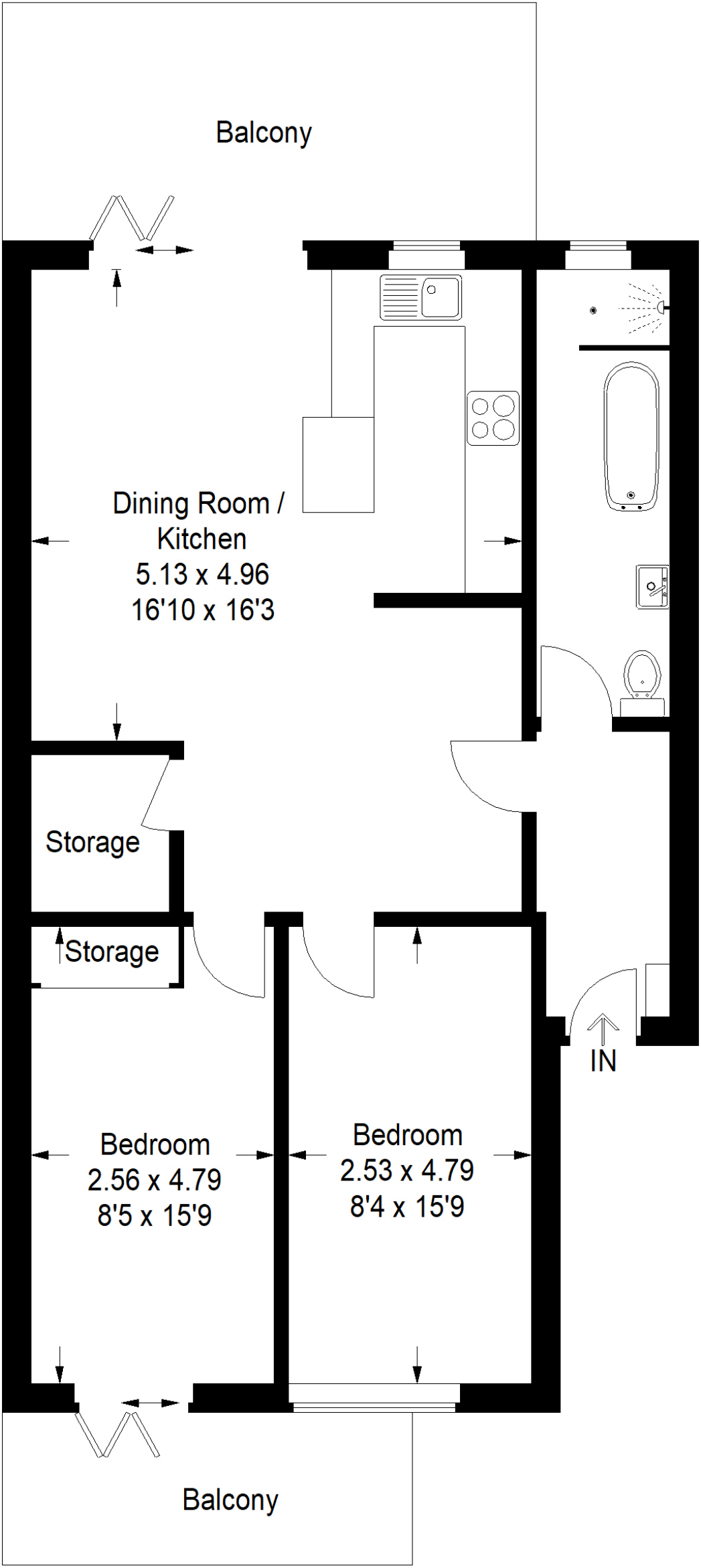


Illustration for identification purposes only, measurements are approximate, not to scale.
FloorplansUsketch.com © 2021 (ID 819683)

Important Notice

Michael Morris, their clients and any joint agents give notice that:1: They are not authorised to make or give any representations or warranties in relation to the property either here or elsewhere,either on their own behalf or on behalf of their client or otherwise.They assume no responsibility for any statement that may be made in these particulars. These particulars do not form part of any offer or contract and must not be relied upon as statements or representations of fact. 2: Any areas, measurements or istances are approximate. The text, photographs and plans are for guidance only and are not necessarily comprehensive. It should not be assumed that the property has all necessary planning, building regulation or other consents and Michael Morris have not tested any services, equipment or facilities. Purchasers must satisfy themselves by inspection or otherwise.

Copyright Michael Morris 2025 Produced for Michael Morris REF : 58699