

PARK HOUSE, LONDON N4

Outstanding one bedroom located on the 6th floor of this well maintained private purpose built block. Benefits include stunning views, superb condition, modern fitted kitchen, bright reception with wood flooring, good size double bedroom and beautifully tiled ensuite shower room. Situated within very easy reach of Finsbury Park, Victoria and Piccadilly line station. Viewing is highly recommended.

£277 p/w



11 Blackstock Road, London N4 2JF Tel: 0207 354 8899
81 Stroud Green Road, London N4 3EG Tel: 0207 281 0129
info@michaelmorris.co.uk | <https://www.michaelmorris.co.uk>



63 Park House, N4

Approximate Gross Internal Area = 35.4 sq m / 381 sq ft

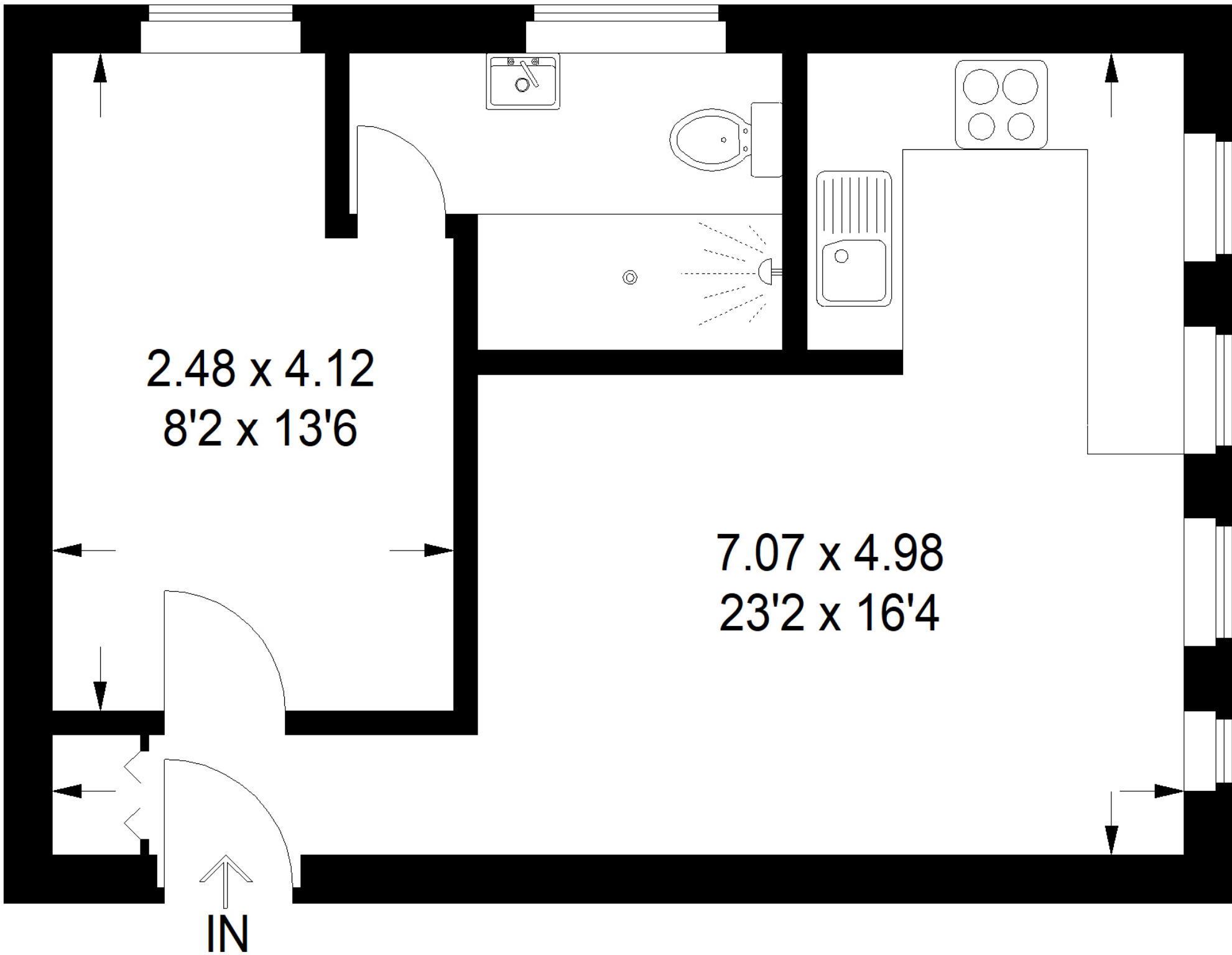


Illustration for identification purposes only, measurements are approximate, not to scale.
FloorplansUsketch.com © 2021 (ID725719)