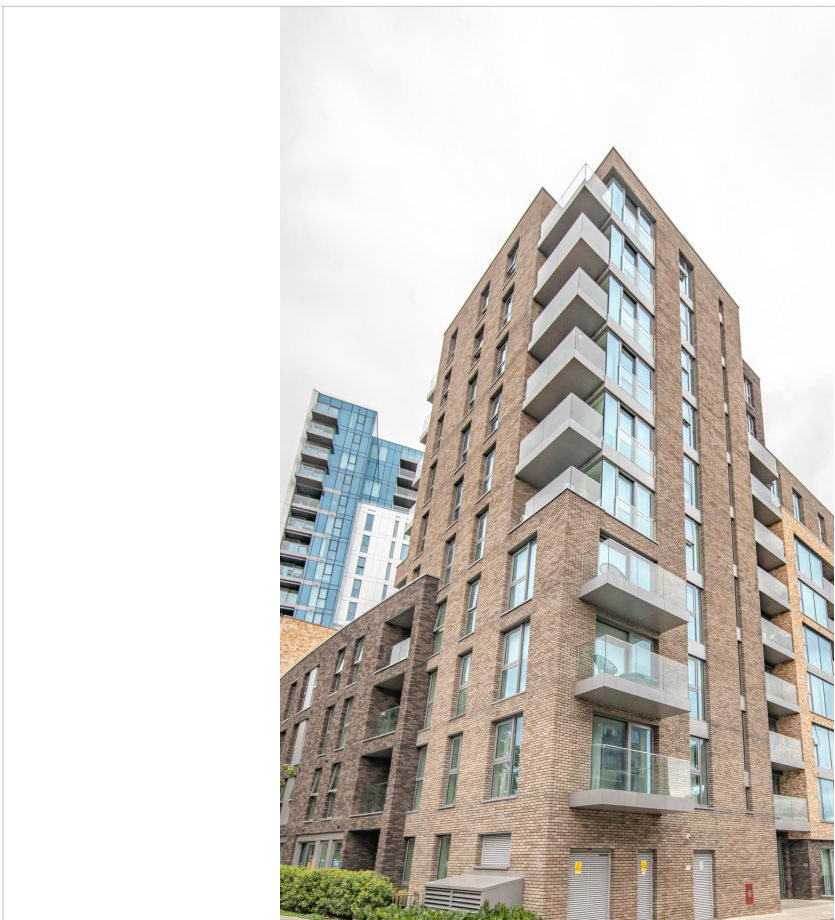
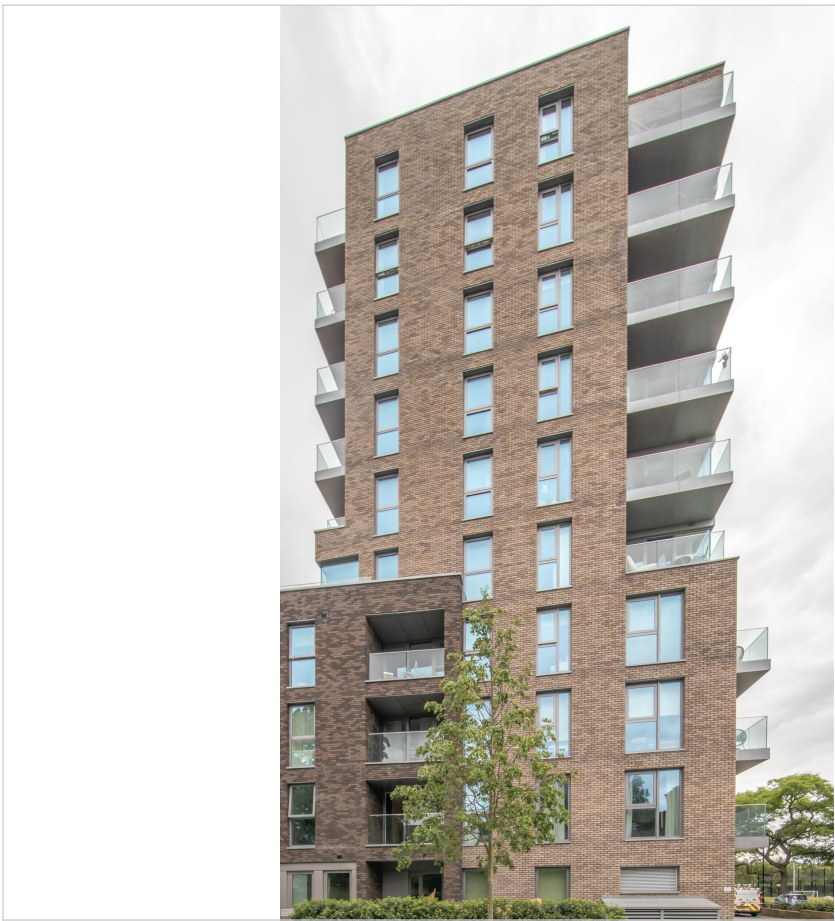


THE SHORELINE BUILDING, LONDON N4

Stunning two bedroom apartment; part of Berkeley's impressive Woodberry Down development. This furnished apartment includes approximately 820sq. Ft. Of living space, an inviting living and dining room, fitted kitchen with integrated Bosch appliances, engineered wood flooring, full length windows and doors, underfloor heating, two double bedrooms (master with fitted wall to wall wardrobes and stylish shower room suite), utility cupboard with washer/dryer. The development also provides access to a 24-hour concierge service, secure bicycle storage, residents gymnasium and pool (coming soon), landscaped gardens and parkland.

Woodberry Downs location places it at the heart of a vibrant community with several amenities and attractions.

£485 p/w



Michael Morris
Estate Agents

11 Blackstock Road, London N4 2JF Tel: 0207 354 8899
81 Stroud Green Road, London N4 3EG Tel: 0207 281 0129
info@michaelmorris.co.uk | <https://www.michaelmorris.co.uk>

