

FINSBURY PARK ROAD, LONDON N4

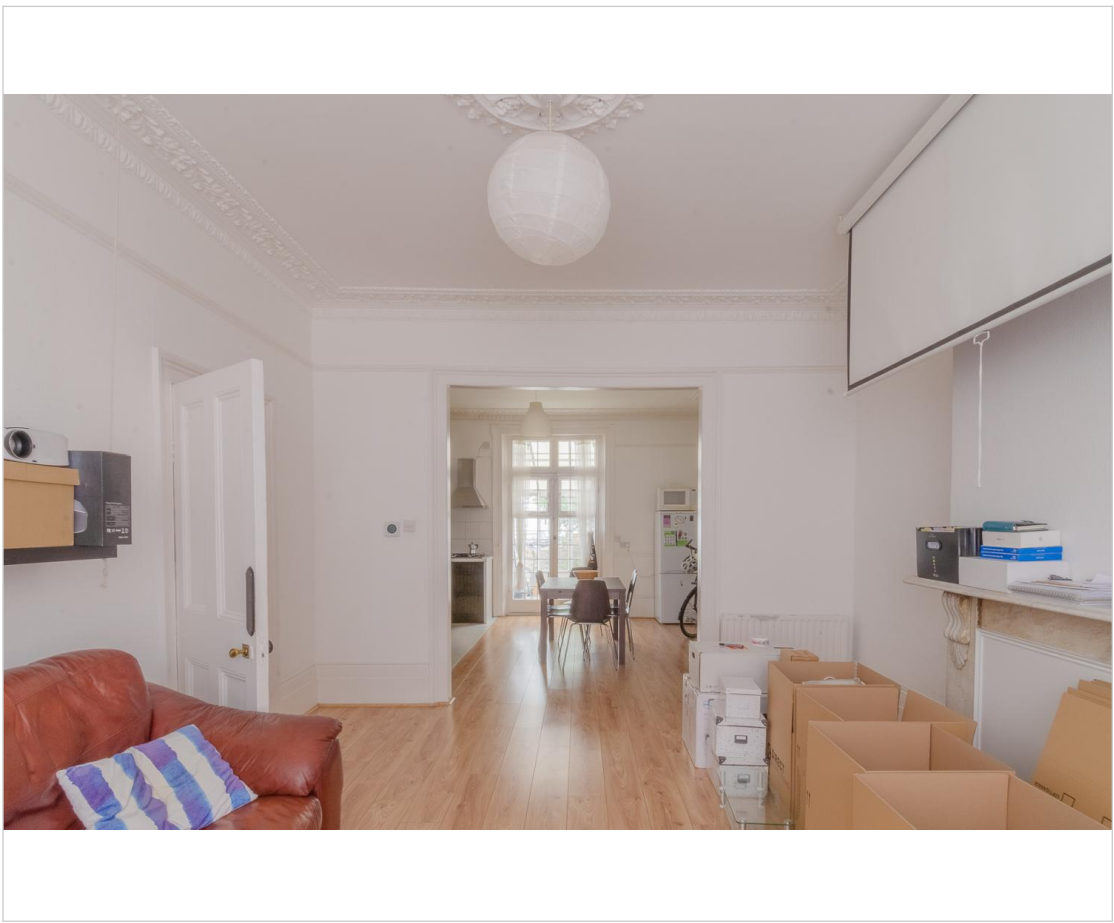
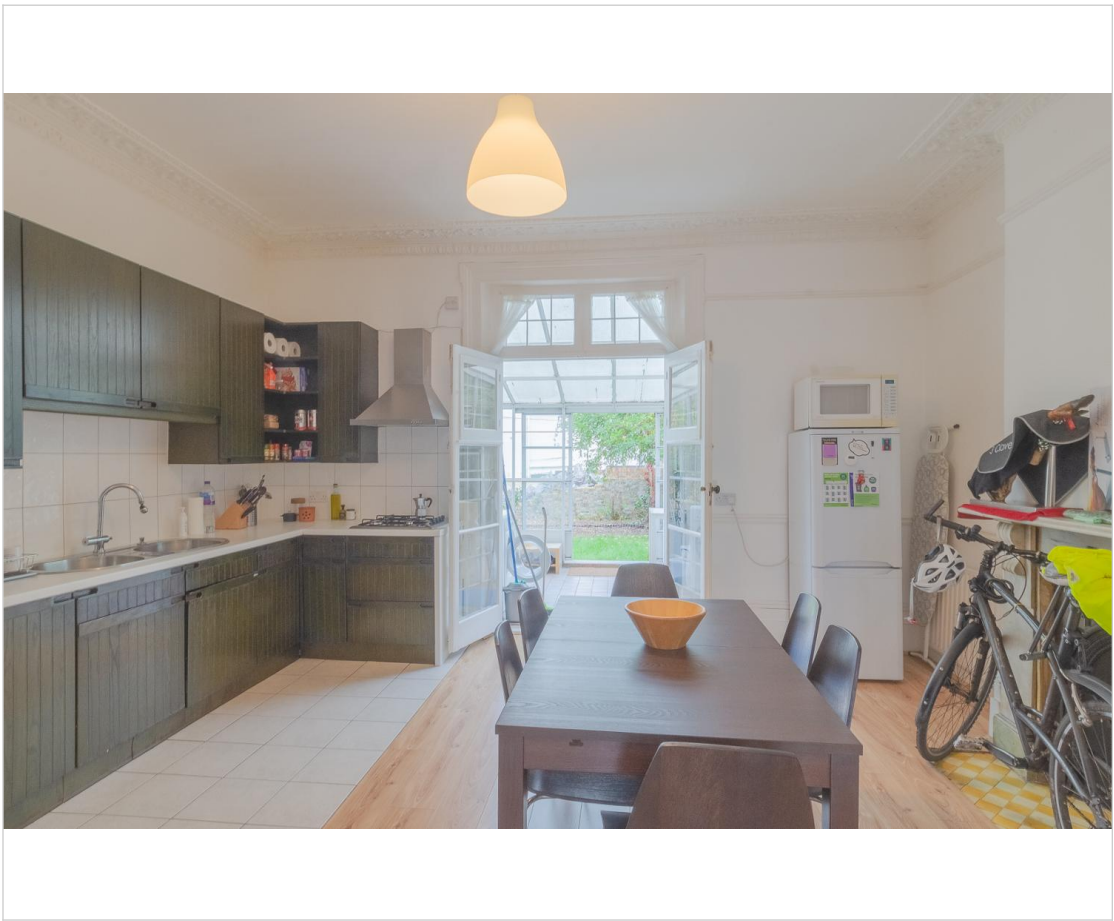
Nestled within one of the rare double fronted houses on Finsbury Park Road, this exquisite and generously proportioned two bedroom ground floor flat offers an enchanting blend of space, charm and tranquility. Boasting sole access to a truly stunning garden, this home is a private oasis in the heart of a sought-after neighborhood.

Step inside to discover a vast and inviting reception area, seamlessly flowing into an expansive kitchen and dining space, perfect for entertaining or simply enjoying the warmth of home. The well designed bathroom features a striking sunken bath, adding a touch of "je ne sais quoi" to everyday living. A delightful conservatory bathes the space in natural light, while a versatile outbuilding offers endless possibilities, from a serene retreat to a creative workspace.

Ideally located on a peaceful and highly desirable street, just moments from the lush expanse of Finsbury Park and the excellent transport links of Finsbury Park Station.

A rare gem not to be missed - viewing highly recommended!

£623 p/w



11 Blackstock Road, London N4 2JF Tel: 0207 354 8899
81 Stroud Green Road, London N4 3EG Tel: 0207 281 0129
info@michaelmorris.co.uk | <https://www.michaelmorris.co.uk>

