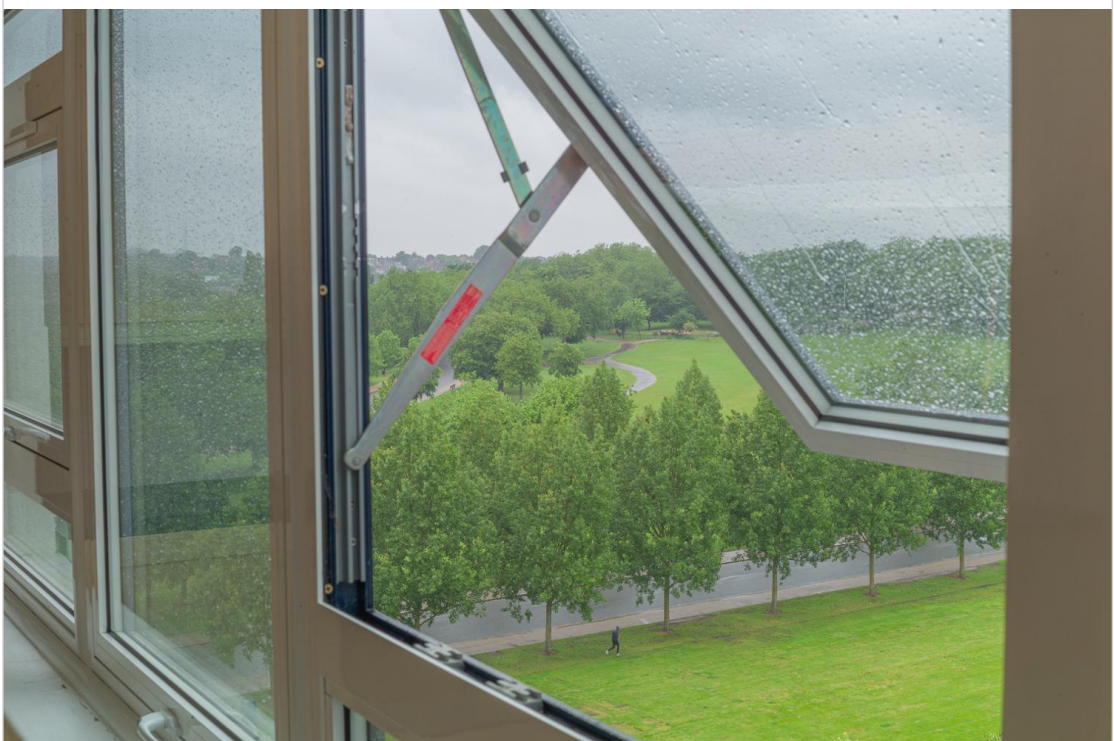


# PARK HOUSE, LONDON N4

Outstanding One Double Bedroom apartment, in a private purpose built block. The apartment is situated on the 9th floor with lift access and double glazed windows. Benefiting from amazing views across central London, large reception room, modern kitchen and large double bedroom and en-suite bathroom. Situated within easy reach of Finsbury Park, Victoria and Piccadilly Line Station and main line rail services.

£300,000



11 Blackstock Road, London N4 2JF Tel: 0207 354 8899  
81 Stroud Green Road, London N4 3EG Tel: 0207 281 0129  
info@michaelmorris.co.uk | <https://www.michaelmorris.co.uk>





# Park House

Approximate Gross Internal Area = 35.4 sq m / 381 sq ft

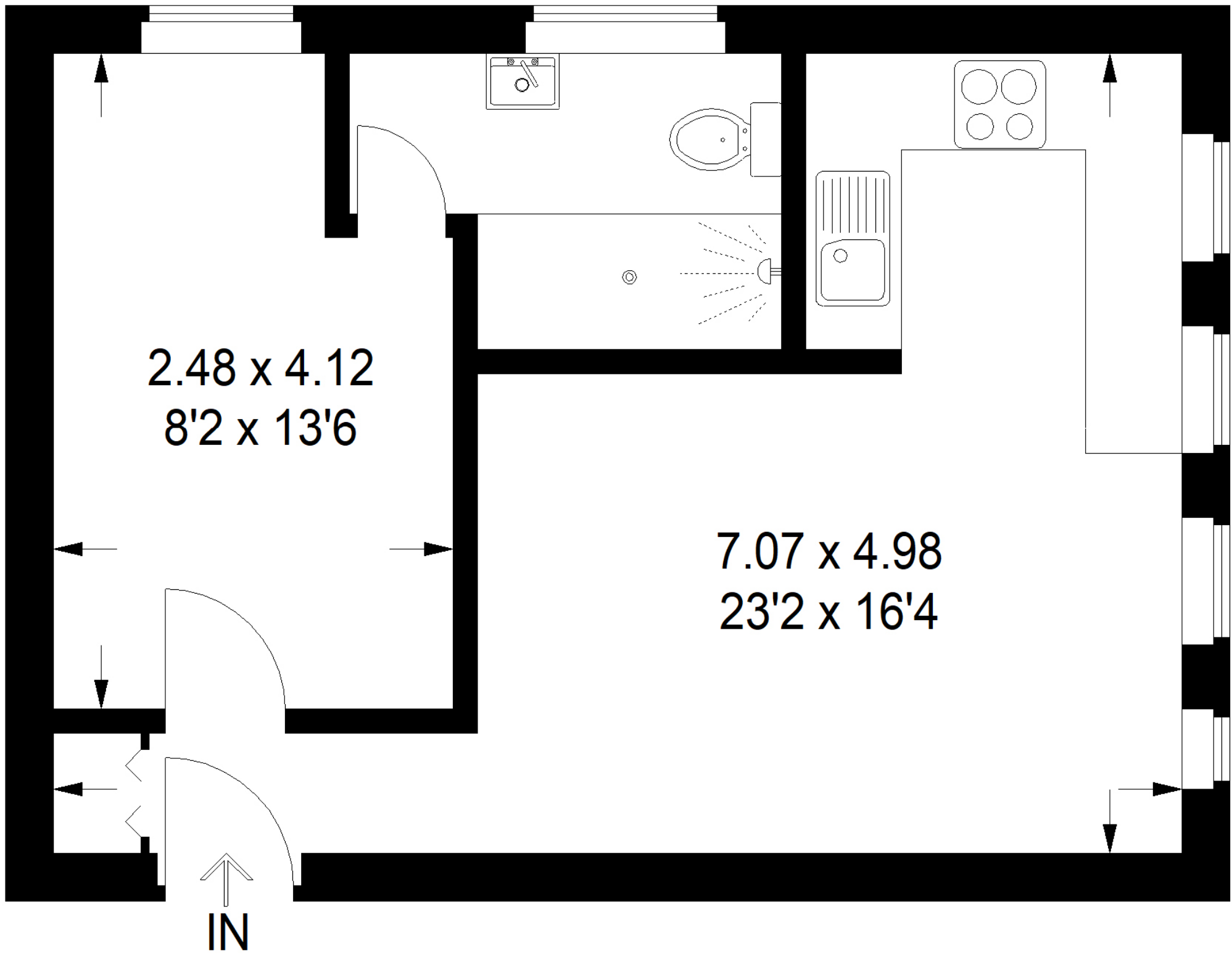


Illustration for identification purposes only, measurements are approximate, not to scale.  
FloorplansUsketch.com © 2021 (ID725719)